

Historic, Archive Document

Do not assume content reflects current scientific knowledge, policies, or practices.

62.71

LIBRARY
RECORDED
★ SEP 19 1946 ★
Agriculture

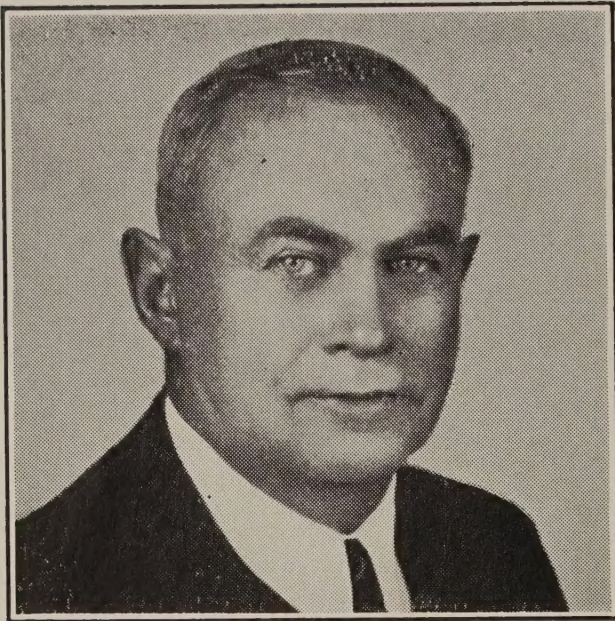


Tulip, Grenadier

GILL BROS. Seed Co.

Portland, Oregon.

Fall Catalog 1946



Edw. E. Gill



Ray W. Gill

First Annual Fall Catalog

For thirty-six years we have issued, annually, our Spring seed catalog. There has been an increasing number of requests each year for us to issue a Fall catalog and our introduction of such was delayed by the war. We now offer you one of the most complete Fall catalogs on the West Coast. We list many new and standard varieties. Our Daffodils are mostly grown in Oregon and Washington. Tulips and Hyacinths are imported from one of the best Holland growers. We send large bulbs that will bloom, under proper care, the first season. If you are not interested in this catalog please give it to a neighbor.

SUBSTITUTION

IN VIEW OF THE FACT THAT SOME KINDS OF BULBS ARE SHORT THIS YEAR, we would suggest that customers give as much as possible their permission for us to substitute the nearest variety to the one ordered in case we should be sold out. On items of small importance, or during the rush of planting season, when time is precious, we may send out other similar sorts, if out of the ones ordered. Such substitutions may be returned for credit if unsatisfactory to the purchaser.

OUR WARRANTY

We give no warranty, expressed or implied, as to the productiveness of any seeds or bulbs we sell and we will not be in any way responsible for the crop. Our liability in all instances is limited to the purchase price of the items ordered.

HOW TO ORDER

Send all mail orders to Montavilla Station, Portland 16, Oregon.

Order early, as there is a heavy demand on some stocks and they may be exhausted.

Remittance must accompany your order. Stamps are accepted up to \$1.00. Money Orders, Express Orders, Bank Drafts and Certified Checks are preferred, although other checks are accepted for collection.

If your remittance should be short, we will send you in accordance with the amount paid and thus avoid delay.

C. O. D. Shipments will be made if one-fourth of the catalog prices are remitted with the order. You can save C. O. D. charges by sending your remittance with your order.

Please write correspondence on a separate sheet from your order.

All prices in this Catalog are postpaid to your address.

Prices quoted on quantities of 1 to 3 cover only one kind for the listed price. Where the dozen price is quoted you may select not more than 2 kinds for the dozen price listed or 6 each of 2 kinds.

SHIPMENT OF YOUR ORDER

We will fill your order whenever goods are in stock. Daffodils, Tulips, Hyacinths and most of the Fall bulbs for Fall planting are usually in stock by Sept. 1st to 15th.

When your package is received, open it so that the bulbs will not mold. If not satisfactory please write us at once.



A field of King Alfred Daffodils in Oregon

DAFFODILS OR NARCISSI

Although the common English name "Daffodil" is more popular than the botanical name "Narcissi," either name is being used for these useful spring flowers. The Jonquil is only one of the eleven groups of Narcissi.

While this is not a long list they are all proven varieties. All prices postpaid.

Yellow Trumpets

AEROLITE—Star shaped, deep primrose perianth, with yellow trumpet. A large flower that is a fine keeping cut flower. Each 15c; doz. \$1.50.

ALASKA—Immense flowers of deep gold; very graceful with frilled and recurved trumpets. Each 25c; doz. \$2.50.

DIOTIMA—A new giant of graceful formation. Rather flattened stems, often 2 feet long.

Star shaped perianth of medium primrose often 5 to 6 inches across. The trumpet a little deeper in color. One of the best. Each 45c; 3 for \$1.25; doz. \$4.50.

KING ALFRED—Deep golden yellow, of great substance on strong 2-foot stems. One of the most popular for garden, forcing and cutting. Each 15c; doz. \$1.50; 100 for \$10.00.

EMPEROR—Perianth deep primrose; trumpet clear yellow. Popular for outdoor planting. Each 10c; doz. \$1.00.

WARWICK—Golden yellow perianth with long slightly twisted petals. At the mouth a flaring trumpet of deep chrome yellow, slightly tinged with orange. Each 35c; 3 for 95c; doz. \$3.50.

White Trumpet Daffodil

MRS. E. H. KRELAGE—Often called the "White King Alfred" because of similar formation. The petals open ivory white and the trumpet opens soft primrose yellow but gradually fades to creamy white. Each 35c; 3 for 95c; doz. \$3.50.

BEERSHEBA—A grand flower, all white and nearly five inches across. Large flat perianth with long flanged trumpet. A vigorous, outstanding variety of great substance. Each \$1.00; 3 for \$2.75.

Bicolor Daffodil

MRS. R. O. BACKHOUSE—The pink trumpet daffodil. Fine informal perianth of ivory white, slim long trumpet of apricot pink changing to deeper pink at the fringed edge. Splendid keeping cut flower. Each 80c; 3 for \$2.00; doz. \$7.50.

EMPRESS—Creamy white perianth; large bright yellow trumpet. Each 10c; doz. \$1.00.

SPRING GLORY—Trumpet pure yellow, perianth white and of good form. Considered one of the best bicolor varieties. Each 15c; doz. \$1.50.

VAN WAVEREN'S GIANT—Very pale primrose yellow, over-lapping perianth, large, widely opened deep yellow trumpet. Each 20c; 3 for 55c; doz. \$1.85.

LOVENEST—Milk white perianth, saffron yellow trumpet, turning apricot with pinkish flush mostly towards the edge of the trumpet. Flower of medium size and height. Each 30c; 3 for 80c; doz. \$3.00.

Incomparabilus Daffodil

CROESUS—Large, round, imbricated perianth of light primrose with expanded orange crown, deep yellow at base.

FORTUNE—A giant of magnificent statue, perfect form and splendid color. Broad, flat, well overlapping perianth of clear golden yellow; large long cup of intense, glowing deep orange throughout, finely ruffled at the brim. Early and free flowering, fine substance. Each \$1.00; 3 for \$2.75.

FRANCISCUS DRAKE—Pure white perianth, yellow at the base; broad cup, golden yellow at the base, and bright orange at the frilled edge. Each 25c; doz. \$2.50.

HELIOS—Flat, overlapping, deep sulphur yellow perianth with orange yellow cup, slightly frilled at mouth. Each 15c; 3 for 40c; doz. \$1.50; postpaid.

JOHN EVELYN—Pure white perianth of large, round, strong, well overlapping petals; large cup of soft orange yellow, widely expanded and densely frilled at mouth. Each 25c; 3 for 60c; doz. \$2.20; postpaid.

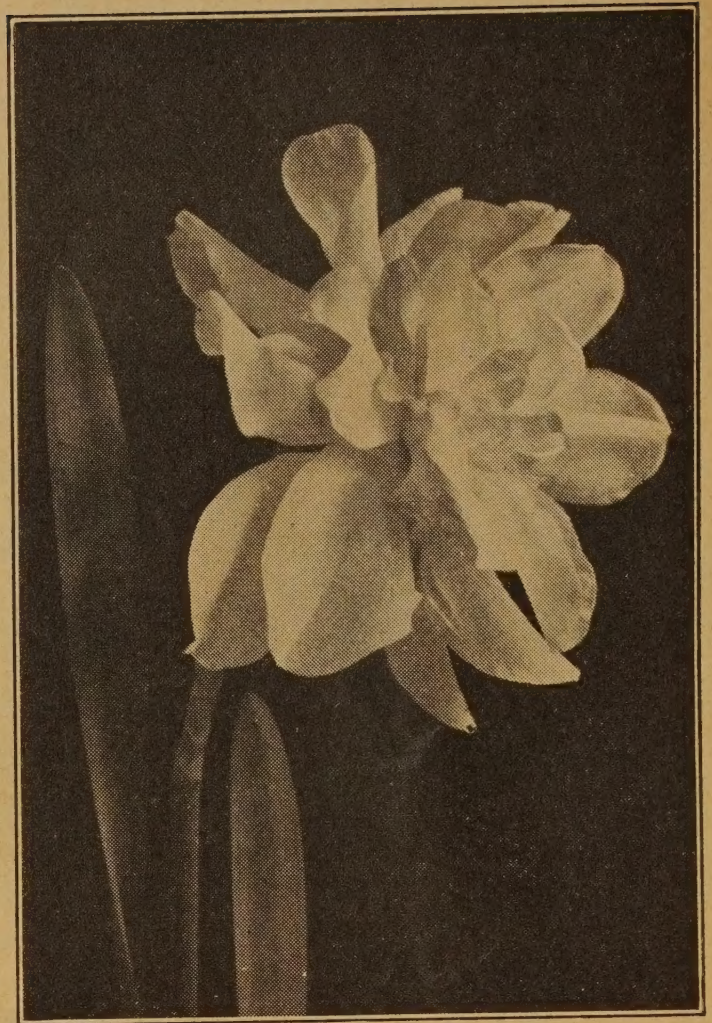
RED CROSS—Very large, flat, overlapping, primrose yellow perianth; orange yellow cup, deep orange at the densely frilled brim. Free flowering on strong, tall stems. Each 25c; 3 for 50c; doz. \$1.75; postpaid.

Leedsii Type

This type has white perianths, while the crowns are white or light yellow, sometimes lightly tinged with pink or apricot. The Star Narcissus and very dainty.

DAISY SCHAFFER—Large, flat, well overlapping pure white perianth with large, widely opened cup of very light primrose. An outstanding new variety. Each \$1.00.

HERA—All white, cup frilled, edges primrose. Each 12c; 3 for 30c; doz. \$1.10.



Daffodil, Twink, Page 3

WILL SCARLET—Creamy white, reflexed, perianth with widely expanded, frilled, orange red cup, yellow at the base. Each 12c; 3 for 30c; doz. \$1.10. Postpaid.

QUEEN OF THE NORTH—Broad, white perianth with light primrose cup, changing into ivory white. Each 12c; 3 for 30c; doz. \$1.10. Postpaid.

SILVER STAR—Pure white perianth with light yellow cup. Each 15c; 3 for 40c; doz. \$1.50. Postpaid.

TUNIS—Broad, pointed, creamy white perianth, slightly recurving, with wide expanded, sulphur yellow cup, edged amber, deepening with age. Each 60c; 3 for \$1.60; doz. \$6.00. Postpaid.

Barrii Type

The cup in this class measures less than one-third the length of the perianth segments.

ALCIDA—Creamy yellow perianth with orange yellow crown, margined red. Sturdy, late flowering variety. Each 15c; 3 for 40c; doz. \$1.50. Postpaid.

BATH'S FLAME—Deep yellow perianth with red margined deep yellow cup. Each 12c; 3 for 30c; doz. \$1.10. Postpaid.

DIANA KASNER—Pure white, well overlapping perianth with fluted yellow cup passing to orange; crimson at the frilled rim. Free flowering. Each 15c; 3 for 40c; doz. \$1.50. Postpaid.

FIRETAIL—Broad, overlapping, ivory white perianth with flat orange crown, scarlet orange at the frilled brim. Each 20c; 3 for 55c; doz. \$2.00. Postpaid.

LADY DIANA MANNERS—Pure white perianth with flat orange crown, edged deep orange. Each 15c; 3 for 40c; doz. 1.50.

Poeticus Type

Perianths are snow white; cups are small and flat with yellow eyes, edged scarlet. Sweet scented and valuable for naturalizing.

Prices: Each 12c; 3 for 30c; doz. \$1.10. Postpaid.

HORACE—Large, star shaped, broad, white perianth with flat, yellow eye, edged crimson.

ORNATUS—Pure white, fine round shaped perianth with yellow eye, margined scarlet.

RECURVUS or PHEASANTS EYE—Somewhat reflexing, pure white perianth with deep scarlet margined, green eye. Late flowering, sweet scented; only for outside planting.

Poetaz Type

Hybrids of Poeticus and Polyanthus Narcissus. Very fragrant and hardy, bearing flowers in clusters.

CHEERFULNESS—Double flowers; white petals with yellow at center; fragrant. Each 15c; 3 for 40c; doz. \$1.50. Postpaid.

LAURENS KOSTER—Pure white perianth with yellow eye. Good for forcing or outside. Each 10c; 3 for 25c; doz. 95c. Postpaid.

ORANGE CUP—Yellow perianth, nicely curved, with frilled glowing orange eye. Each 15c; 3 for 35c; doz. \$1.25. Postpaid.

THE PEARL—Creamy white perianth segments, interspersed with a few sulphur yellow coronal segments. Each 15c; 3 for 35c; doz. \$1.25. Postpaid.

Double Narcissus

ALBUS PLENUS ODORATUS—Snow-white, gardenia shaped flower, wonderfully fragrant. Very late flowering. Each 15c; 3 for 35c; doz. \$1.25. Postpaid.



Daffodil, Daisy Shaffer, Page 2

MARY COPELAND—Almost white perianths segments, interspersed with shorter coronal segments, orange and orange scarlet. Each 35c; 3 for 95c; doz. \$3.50. Postpaid.

TWINK—Primrose yellow perianth segments with alternating primrose and orange coronal segments. Each 20c; 3 for 55c; doz. \$2.00. Postpaid.

VON SION—Double golden yellow. Each 15c; 3 for 40c; doz. \$1.50.

Polyanthus Narcissus

Splendid for forcing and much used to place in bowls in water, braced with rocks or pebbles.

CHINESE SACRED LILY—Fragrant white flowers with yellow cups. Large bulbs. Each 45c; 3 for \$1.25; also medium size Each 30c; 3 for 80c. Postpaid.

GRAND SOLEIL d'OR—Deep golden yellow perianth with orange yellow cup; borne in clusters. Each 12c; 3 for 30c; doz. \$1.10. Postpaid.

PAPER WHITE—Pure white perianth and cup; very fragrant. Valuable for early forcing. Each 12c; 3 for 30c; doz. \$1.10. Postpaid.

Little Daffodils

Valuable for rock gardens, beds or borders. Very hardy.

AGNES HARVEY (Triandrus type)—Sharply reflexed white perianth with white cup, sometimes faintly flushed apricot. Flowers of drooping habit; one to three to the stem. Each 20c; 3 for 55c; doz. \$2.00. Postpaid.

BULBOCODIUM CONSPICUUS—Deep lemon yellow funnel shaped flowers. Reed-like foliage; height 6 inches. The Hoop Petticoat flower. Each 12c; 3 for 30c; doz. \$1.10. Postpaid.

CANALICULATUS (Tazetta type)—Dainty little Narcissus about 6 inches high. White perianth with yellow cup; clusters of 3 to 5 flowers; sweet scented. Each 12c; 3 for 30c; doz. \$1.10. Postpaid.

FEBRUARY GOLD (Cyclamineus hybrid)—Golden yellow perianth with sharply reflexing petals; short, straight trumpet of deep golden yellow, fluted at mouth. Extra early; 12 inches. Each 15c; 3 for 40c; doz. \$1.50. Postpaid.

QUEEN OF SPAIN—Canary yellow trumpet with graceful reflexing perianth. A wild hybrid with variation in size and shape of flowers; 12 inches. Each 25c; 3 for 70c; doz. \$2.50. Postpaid.

THALIA "The Orchid Flower"—3 to 4 pure white flowers to the stem. Very popular when known and ideal for bouquets and corsages. Each 25c; 3 for 70c; doz. \$2.50.

Jonquils and Jonquil Hybrids

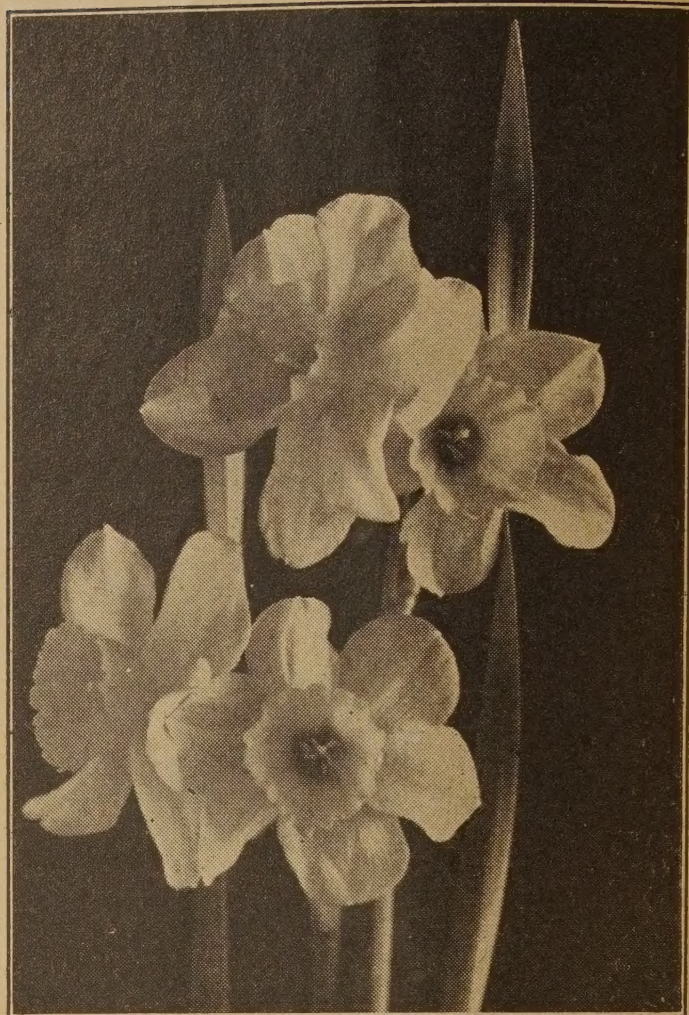
CAMPERNELLE (Double)—Golden yellow, double flowers. Each 12c; 3 for 30c; doz. \$1.10. Postpaid.

CAMPERNELLE (Single)—Beautiful gold yellow. Each 12c; 3 for 30c; doz. \$1.10. Postpaid.

GOLDEN PERFECTION—A large hybrid Jonquil with 2 or 3 flowers; bright yellow flowers on long stems. Each 60c; 3 for \$1.50. Postpaid.

GOLDEN SCEPTER—Star-shaped perianth with large, trumpet like cup, slightly rolled back at the mouth; golden yellow; very fragrant. Each 12c; 3 for 30c; doz. \$1.10. Postpaid.

JONQUILLA SIMPLEX—The original single, sweet scented, with 3 to 5 rich yellow flowers to the stem. Each 15c; 3 for 35c; doz. \$1.25. Postpaid.



Jonquil, Golden Perfection

Daffodils In Mixture

SUPER MIXED—A mixture of large trumpet types. Each 12c; 3 for 30c; doz. \$1.10. Postpaid.

SHORT CUP MIXTURE—A fine mixture of short cup types. Each 12c; 3 for 30c; doz. \$1.10.

Galanthus or Snowdrop

These popular, hardy spring flowers are well known and very easy to grow.

Prices: Postpaid. 3 for 20c; doz. 70c; 100 for \$4.75.

Chionodoxa

Also called Glory of the Snow. A fine early spring flower blooming with the Crocus. Sky blue flowers with pure white hearts. Very hardy and ideal for borders, beds, and for naturalizing. Plant September to November, 3 to 4 inches deep.

Prices: Postpaid. 3 for 25c; doz. 65c; 100 for \$4.50.

Crocus

Extra early spring flowers; popular with everyone.

Prices: Postpaid. 3 for 25c; doz. 75c; 100 for \$5.25. These prices based on one variety of a kind. First size bulbs.

LARGE YELLOW—A fine, large yellow sort.

PURPUREA GRANDIFLORA — Extra fine, large purple.

SIR WALTER SCOTT—White, striped purple.

SNOWSTORM—Pure white, very large flowers.

Scillas

They usually bloom along with the tulips. Graceful spikes with bell shaped flowers somewhat similar to the blooms of hyacinths. They will thrive under nearly all conditions, making them ideal for beds and borders; also naturalizing. There are several types of this bulbous flower.

Price: Postpaid. 3 for 25c; doz. 70c; 100 for \$4.75. First size bulbs. Prices based on one variety of a kind.

ROSEA (Campanulata or Wood Hyacinths)—A splendid pink variety.

SIBERICA BLUE—Light blue of Siberica type.

SIBERICA ALBA—Clear white flowers. Siberica type.

MIXED—A fine mixture, embracing all main colors.

Muscari (Grape Hyacinths)

A splendid spring flower. Very hardy and will grow under almost all conditions. Ideal for borders or beds and for naturalizing. **Prices, unless noted, postpaid: 3 for 20c; doz. 60c; 100 for \$4.25.**

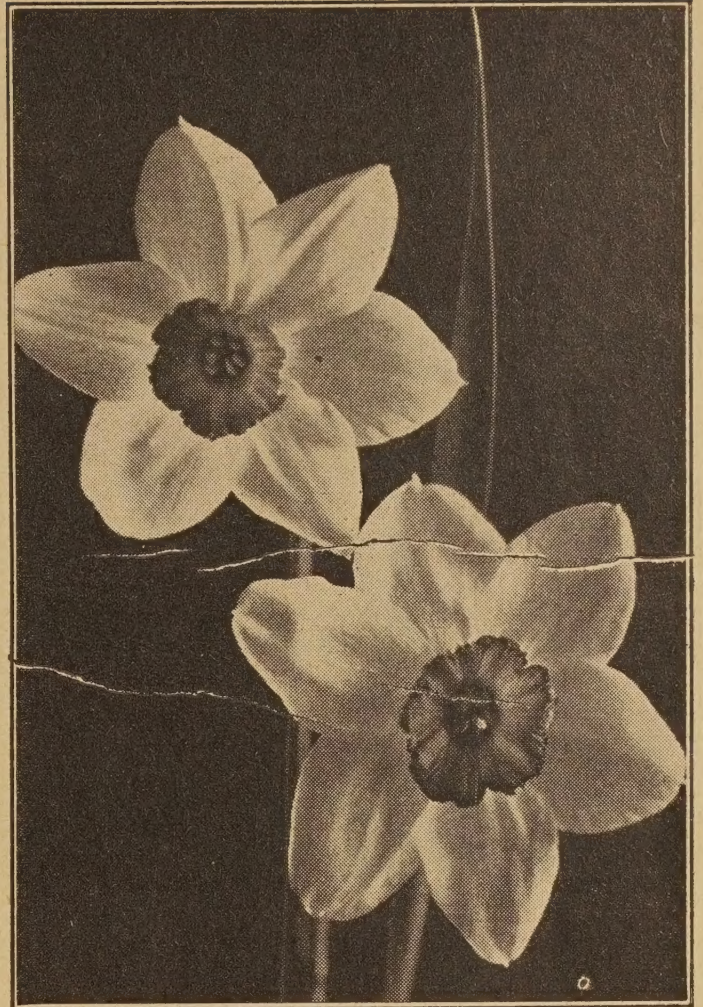
BLUE—A popular color.

ALBA—White flowers.

PLUMOSUM (Plume Hyacinths) — Feathery plumes of delicate violet; very attractive. They last exceptionally well when cut. Very hardy. **Prices: Each 12c; 3 for 30c; doz. \$1.00; 100 for \$7.00. Postpaid.**

Freesias

Plant inside except in the South. They bloom in Feb. or March, with fragrant flowers largely used for cutting. Offered in mixture, also in separate colors, white, yellow and lavender blue. **3 of the same kind for 20c; doz. 60c; 100 for \$4.50. Postpaid.**



Lady Diana Manners, Page 2

English Iris

They thrive in any good, well-drained soil and have many colors. Splendid cut flowers for late June and early July. They need some protection in severe climates.

SPECIAL MIXTURE—3 for 35c; doz. \$1.25.

Dutch Iris

Splendid spring flowers blooming from early May into June. Ideal for flower arrangements and good keeping cut flowers. Plant these bulbous Iris 5 to 6 inches deep in well-drained soil.

Prices on each variety below, postpaid: 3 for 25c; doz. 75c.

CAJANUS—Rich yellow Spanish Iris. Blooms later than the Dutch Iris.

WEDGEWOOD—A very early, rather tender variety doing well out of doors in the South and along the western edge of the Pacific Coast. Standards pale Wedgewood blue with deeper falls.

WHITE EXCELSIOR—Medium season. Standards pure white; broad falls of pure white with yellow blotch. Extra large flowers.

YELLOW QUEEN — Medium season. Standards and falls golden yellow. Thin wiry stems; fine for cutting.

MIXED DUTCH IRIS—A good range for color and season.



Hyacinths

These important flower bulbs are now available, shipped direct to us from Holland. Their beautiful pleasing colors add much to the early spring flower garden. Plant 4 to 6 inches deep, preferably before November, spacing 6 to 10 inches apart.

Prices, for large bulbs, postpaid: Each 30c; 3 for 75c; doz. \$7.50. Prices are based on one of a kind but you may order 6 at the dozen rate.

BISMARCK—Light sky blue; very large broad truss of loose form; large, long stemmed bells. Fine for bedding and forcing.

GERTRUDE — Rosy-pink; well-shaped compact trusses. Splendid for forcing or bedding.

GRAND MAITRE — Fine deep porcelain blue; very large, broad well-formed spikes, nicely curled bells. Fine for forcing or bedding.

JAN BOS — Carmine, lighter centered bells; small compact spikes. Good for early forcing and bedding.

KING OF THE BLUES—Deep glossy blue; splendid, well formed, long compact spikes on short stems. Bells of medium size but of great substance. Late forcer, excellent bedder.

LA VICTOIRE—Bright carmine red; trusses formed of medium sized bells; strong stems. Splendid bedder and forcer.

L'INNOCENCE—Pure white; broad loose trusses of elegant form; large, well shaped bells. The best pure white for all purposes.

PINK PEARL—Rosy pink; large broad spike on short stem; large bells. Early forcer and bedder.

QUEEN OF THE PINKS—Lovely bright rosy pink; large compact trusses of fine shape; bells of medium size. Strong, sturdy stems. Excellent bedder and forcer.

YELLOW HAMMER — Clear yellow; large, broad, well shaped trusses.

Trigridia or Tiger Flower

Gorgeous colors, produced during the summer. Short lived blooms but very brilliant. Plant 2 to 3 inches deep and 6 to 8 inches apart. We offer a fine range of colors in mixture. **Each 12c; 3 for 30c; doz. \$1.10. Postpaid.**

Lily of the Valley

Hardy out of doors. They require a mellow, rich soil and a moist, shaded position. Cover pips one-half inch deep. Delivery Nov. to Feb. Oregon grown pips: **6 for 35c; doz. 65c; 100 for \$4.00. Postpaid.**

Early Single and Double Tulips

These bloom long before the late types and in many brilliant colors. We supply nice bulbs imported from one of the best Holland growers.

Prices, unless noted: Each 20c; 3 for 50c; doz. for \$1.75. Postpaid. These prices based on one variety of a kind.

COULEUR CARDINAL (Single)—Deep scarlet, toned outside with plum color; inside very bright; large pointed flowers of great substance on strong stems. Medium early.

ELECTRA (Double)—Claret red, shaded carmine; very large double flowers on strong stems.

GENERAL DE WET (Single)—Golden yellow, splashed and stippled deep orange, giving effect of clear orange. Good for either bedding or forcing.

IBIS (Single)—Dark rose, changing to clear pink at the edges of the petals, large round flowers. Good for bedding or forcing.

KEIZERSKROON (Single)—Very popular, brilliant flowers. Bright crimson scarlet with broad golden yellow border; bold cup shaped flowers on stout stems.

MON TRESOR (Single)—Clear golden yellow; very large flower on stiff stems. Excellent for beds and forcing.

MR. VAN DER HOEFF (Double)—A fine golden yellow.

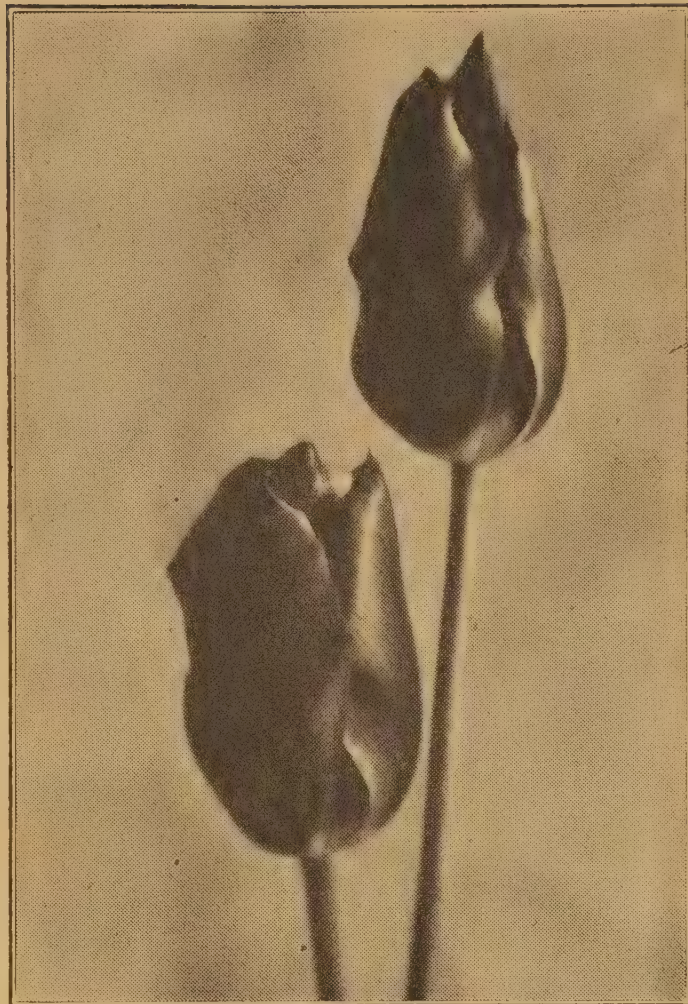
MURILLO (Double)—White, shaded pink towards edges of petals, giving the effect of a delicate pink.

ORANGE NASSAU (Double)—Blood-red, flushed fiery red, with small margin of orange.

PEACH BLOSSOM (Double)—Deep rose-pink flushed white; large full flower on strong stem.

SNOWBALL (Double)—An outstanding white sort in double.

WHITE HAWK (Single) (White Falcon, Albion)—Large, globular milk white flowers of great substance, with crinkled petals on stout stems.



Tulip, Couleur Cardinal

Parrot Tulips

The artistically, quaintly shaped flowers have lacinated or serrated, slashed petals at the edges. The flowers are large and showy. Whereas the old varieties have weak stems and are shy bloomers, the newer sorts have tall, strong stems and are more dependable bloomers. They usually flower along with the Darwins. All varieties listed are newer introductions.

Prices: Each 17c; 3 for 45c; doz. \$1.45. Postpaid. These prices for one variety of a kind.

FANTASY—Salmon-pink with green marking on outer petals; inside deeper salmon-pink. A sport of Clara Butt.

SUNSHINE—Pure golden yellow. Deeply lacinated flowers on medium tall stems. Sport of Cottage Tulip Bouton d'Or.

VIOLET QUEEN—Lilac blue with white base. A delicate lovely color. Sport of Darwin, Opal Queen.

Cottage Tulips

Cottage or Mayflowering Tulips are generally the most permanent types for garden use. They have chiefly oblong shaped flowers with narrow base, although there are Cottage Tulips strongly resembling the Darwins. Some varieties have reflexed petals. The stems are long and slender, but generally stiff. Besides a wide range of exquisite colors, there are many very good yellow sorts, a color rather rare in other late flowering classes.

Prices on top size bulbs: Each 17c; 3 for 45c; doz. \$1.45. Postpaid. These prices based on one variety of a kind.

CARRARA—Pure white with yellow anthers. Large globular flower. An outstanding variety.

DIDO—Orange red, slightly flushed cerise, with amber orange edges; inside salmon orange with yellow base passing to slatish green and yellow anthers.

GOLDEN HARVEST—Soft salmon yellow with yellow anthers. Large globular flowers of great substance on tall, strong stems. Outstanding variety.

GRENADIER—Bright orange-red with yellow base; large sweet scented flowers.

JEAN DESOR—Deep yellow with orange red edges and black anthers. Large flowers on tall stems; very attractive and highly recommended.

MARJORIE BOWEN—A combination of buff and salmon, which gradually passes to lilac-rose, flushed salmon. White base with black anthers. Large, long flower.

MRS. MOON—Pure deep yellow, pointed flowers with slightly reflexing petals.

PICOTEE (Maiden's Blush)—White, with graceful reflexed petals margined deep rose. When in full bloom the whole flower is suffused pink.

QUEEN OF THE NORTH—White, broadly edged pink with large white base. Large, strong flowers, short stemmed.

ROSABELLA—Deep rose with light edges; inside soft rose with creamy white base and black anthers. Exceptionally good for outside planting.

SURPRISE BEAUTY—Creamy yellow with rose pink streaks, gradually turning to almost solid pure pink. Large, very attractive flowers on tall, strong stems.

EXTRA FINE MIXED—A great range of varieties and colors in mixture.



Daffodil, Aerolite, Page 1

Darwin Tulips

For every garden purpose Darwin Tulips are unequalled. They are unexcelled for bright colors, length and strength of stems. The flowers are triangular or cup shaped and have a flat base. Inside the flowers the base is usually blue or white, or a combination of these colors. They bloom rather late.

Prices on top size bulbs: Each 17c; 3 for 45c; doz. \$1.45. Postpaid. These prices based on one variety of a kind.

AFTERGLOW—Salmon pink, tinged orange, edges of petals light orange, inside deep orange, with yellow base.

BARTIGON—Clear crimson red, white base, ringed deep blue. Medium tall. Good for bedding and forcing.

CITY OF HAARLEM—Intense deep scarlet, with white margined dark blue base. One of the best scarlet Darwins for growing indoors or outside.

CLARA BUTT—Beautiful clear salmon-pink with blue base. A popular old variety for bedding.

FAUST—Dark, glossy brown-violet with blue base.

FARNCOMBE SANDERS—Bright scarlet, inside vivid cerise scarlet with white base, marked blue. Large broad petalled flower of perfect shape.

LA TULIPE NOIRE—Velvety deep maroon black; very dark, almost black.

PHILLIP SNOWDON—A very good pure deep pink sport of Bartigon with large white base, edged blue.

PRINCESS ELIZABETH—Vivid rosy pink with lighter edges. Good inside or outside.

PRIDE OF HAARLEM—Brilliant rosy-carmine with blue base. Large flower on tall, strong stem. One of the most popular varieties for planting outside.

THE BISHOP—Beautiful deep heliotrope; blue base with white halo and purple anthers. Best of its color.

WILLIAM COPELAND—Bright lavender; medium sized flower. Splendid for early forcing and good bedder.

WILLIAM PITT—Bright scarlet with purplish bloom on outer petals, and blue starred outer base.

YELLOW GIANT—Rich deep golden yellow with black anthers. Large globular flowers on tall stems.

ZWANENBURG—Pure white with black anthers; tall stems. Good keeping qualities.

SPLENDID MIXED—All colors mixed. Also see special bargains on inside of back cover.

Triumph Tulips

A newer race of Tulips, gained by crosses between the Early, Darwin, Breeder and Cottage Tulips, giving many new colors and combinations hitherto unknown. They make a sturdy growth and large flowers. Valuable outdoor varieties recommended for borders and show purposes.

Prices: 17c each; 3 for 45c; \$1.45 doz. Postpaid. These prices based on one variety of a kind.

ALGIBA—Heliotrope passing to pale mauve towards the edges. Very attractive.

CORNIFORUS—Carmine-red, white base and center; very large cup shaped flowers of great substance on tall, strong stems. For forcing or bedding.

KANSAS—White with yellow base and center; suitable for medium early forcing and bedding.

MR. ZIMMERMAN—Rose pink, with soft silvery sheen on the edge, towards the base passing to white; white base and



Paper White, Page 3

center, yellow anthers. Long, well shaped flowers on medium sized stems.

TELESCOPIN—Violet rose suffused red, violet at base. Large flowers of great substance on tall, strong stems. Can be used for forcing or bedding.

URSA MINOR—Even golden yellow, cup shaped flowers on medium sized, strong stems. Good for pots and outside.

Breeder Tulips

The old-fashioned Dutch Breeder Tulips are somewhat similar to Darwins and have long stems but with different colorings. They are mostly art colored. Bronzy, brown, violet and purple colors predominate. The outer petals have a bloom similar to ripe plums or grapes. Flowers globular with round bases.

Prices: Each 20c; 3 for 50c; doz. \$1.75. Postpaid. These prices based on one variety of a kind.

LOUIS XIV—Dark purple, flushed bronze with broad margin of golden brown. Large, stately flowers.

PRINCE OF ORANGE (Orange Beauty)—Orange red, flushed terra cotta, with narrow orange yellow edges; olive base, streaked yellow.

Botanical Tulips

Native of Southern Europe, Asia Minor and Central Asia. They have bright colors and pointed and recurved petals. They have a great variation in size, shape, form and foliage. They have particular value for rock gardens and borders.

Prices: Each 17c; 3 for 45c; doz. \$1.45. Postpaid. Only one variety of a kind to secure these rates.

KAUFMANNIANA—Soft yellow, the outer petals tinged crimson; inside sulphur yellow. Flowers open very wide in the sunshine resembling a water lily. Height, 8 inches. It is one of the very first species to bloom.

MARJOLETTI—Pale yellow with rosy red edges and black bases; late flowering variety. Height, 16 inches.

EICHLERL—Bright scarlet with dull blotch on outer petals; the base is black, marked with golden yellow. Good sized flowers on 12-inch stems.

Ranunculus

Splendid cut flowers in a great range of brilliant colors. Giant double and semi-double, peony-like flowers, two inches across. Yellows from straw color through all shades to deep golden yellow-red, including dark crimson, scarlet, orange-red, in fact all shades of red and orange-pink. Can be planted outside in Southern states and along the Pacific Coast in Oregon and Washington. **3 for 25c; doz. 90c; 100 for \$7.50. Postpaid.**

Amaryllis

CALIFORNIA HYBRIDS—A fine strain of large Amaryllis Hybrids. The bulbs can be potted January to May and flower freely indoors. They can also be grown in the garden and be taken up and stored like Gladioli. A good range of colors in mixture. **Each 75c; doz. \$7.50. Postpaid.**

HARDY AMARYLLIS BELLADONNA—Throughout the spring months they produce attractive green foliage which dies down in July. A month later the flower stalks spring out of the ground to a height of 2 to 3 feet with umbels of lily shaped flowers 8 to 12 in number and of delicate lilac pink color. **Each 75c; doz. \$7.50. Postpaid.**



Daffodil, John Evelyn, Page 2

Tuberoses

Lovely, large double flowers of thick wax-like texture on graceful, long, strong stems. Valuable in the gardens, also for cut flowers. They also have a rich, exotic fragrance. Plant after danger of frost, 2 inches deep. **Each 15c; 3 for 40c; doz. \$1.50.**

Caladium

FANCY LEAVED MIXED—They provide a beautiful mass of color and are easy to grow. Plant in light shade or full sun, 4 inches deep and 6 inches apart. **Each 40c; 3 for \$1.50. Postpaid.**

Gloxinias

These brilliantly colored flowers are easily grown inside. One of the easiest pot plants to grow. Their gorgeous, velvety flowers last in bloom for months. Plant from Feb. to May, placing one bulb in a 5-inch pot. Cover bulbs about one inch and water sparingly. Set pot in a warm sunny window. Offered in mixture. **Each 60c; 3 for \$1.65. Postpaid.**

Hardy Lilies

Most lilies require well-drained soil. Some shade of the ground is very good but the sun is needed around the upper plant. The soil should be fibrous and rooty; some leaf mold or peat should be added. Plant one foot apart. Charcoal and sulphur sprinkled in planting helps to ward off worm attacks and blue mold. We offer large, blooming sized bulbs.

BELLINGHAM HYBRIDS — Colors range from soft yellow, buff terra cotta, through shades of copper and orange to red, spotted with dark red or soft brown spots. Clusters of 20 to 30 flowers, on stiff stems 4 to 5 feet high. **Each \$1.25; 3 for \$3.50. Postpaid.**

CANDIDUM (St. Joseph or Madonna Lily)—A very hardy early flowering lily with pure white, fragrant flowers on long stems. Does best in full sunshine. Plant about 2 inches to top of bulb. **Each 40c; 3 for \$1.10; doz. \$4.00. Postpaid.**

CROFT LILY—The new popular Easter Lily for forcing, also suited to outdoor planting in the milder climates such as Western Oregon and Washington, also the Southern States. Very large pure white trumpets on stems about 12 to 14 inches in outside culture or 18 to 20 inches in greenhouses. **Each 75c; 3 for \$2.00; doz. \$7.50. Postpaid.**

ESTATE—Most stately and impressive of Easter Lily group. Best adapted to garden culture as well as one of the finest pot lilies and of easy culture. Pure white, large trumpets and heavy substances blooming in clusters of several blossoms. **Each 75c; 3 for \$2.00. Postpaid.**

HENRYI—Rich apricot yellow with a few brown spots; grows 3 to 5 feet; very hardy and free flowering. Plant 8 to 9 inches deep. **Each 75c; 3 for \$2.00; doz. \$7.50. Postpaid.**

PARDALINUM (Sunset Lily)—Large numbers of flowers having reflexed petals; bright orange, spotted maroon, tipped orange scarlet. An easily grown, hardy lily, thriving in shade or cool and moist sunny situations. Height 5 to 7 feet; July flowering. Plant 4 inches deep. **Each 35c; 3 for \$1.00; doz. \$3.75. Postpaid.**

REGALE—Magnificent hardy lily from China; vigorous, 3 to 5 feet, bearing several large, white, fragrant flowers; slightly shaded pink outside with lower inner surface. Thrives in any good well-drained soil, preferring full sun. Plant 6 to 9 inches deep. **Each 55c; 3 for \$1.50; doz. \$5.50. Postpaid.**



Oregon field of Croft Lilies

SPECIOSUM RUBRUM (Pink Tiger Lily)—A strong, vigorous grower with stems 3 to 4 feet tall, with bright blossoms which are white, shaded rose and spotted deep red. Plant 9 inches deep. **Each \$1.25; 3 for \$3.50. Postpaid.**

TIGRINUM GIGANTIUM (Improved Tiger Lily)—A very hardy and free flowering sort; blossoms bright orange, spotted black. Plant 9 inches deep. **Each 45c; 3 for \$1.60; doz. \$4.50.**

UMBELLATUM—One of the earliest lilies, blooming in June. Very free flowering with large umbellate heads of orange-red and yellow. Height 2 feet. Plant 4 inches deep, offered in mixture. **Each 45c; 3 for \$1.60; doz. \$4.50. Postpaid.**

Anemones

They thrive in any soil except heavy clay and make good cut flowers. Set in a sunny situation 10 inches apart and ½ inch deep.

DE CAEN—Giant single mixed. **3 for 25c; doz. 90c. Postpaid.**

ST. BRIGID (Mixed)—Large flowers, mostly semi-double in a large variety of colors. **3 for 25c; doz. 90c. Postpaid.**

Calla Lilies

Hardy outdoors along the Coast of Oregon, Washington, also in all the milder sections of California.

WHITE CALLA—Strong, vigorous grower with flower stems 3 to 5 feet high. Each 50c; 3 for \$1.40; doz. \$5.00. Postpaid.

YELLOW CALLA—Flowers bright yellow, foliage deep green, spotted white. Plant 1 to 2 inches deep. Each 60c; 3 for \$1.65; doz. \$6.00. Postpaid.

PINK CALLA—Medium sized flowers of rose pink shading to cerise when fully open. Height 10 inches. Each 60c; 3 for \$1.65. Postpaid.

RED CALLA—Similar to pink calla but of deeper color, being a rich shade, nearly red. Each 75c; 3 for \$2.00. Postpaid.

Leucojum, Snowflake

Hardy, robust plant producing in May, elegant spikes of long stemmed flowers which are useful cut flowers. Height 14 to 18 inches with heads of 4 to 8, white, drooping, bell-shaped blooms. The flowers have a small dot of green on the edge of each petal. Plant 3 to 4 inches deep, Sept. to Nov. preferred. 3 for 30c; doz. \$1.00. Postpaid.

Ornithogalum

ARABICUM (Star of Bethlehem)—Tall spikes bearing numerous large, milky white, star-shaped flowers with black center and having a distinct aromatic perfume. Very easy culture. 3 for 30c; doz. \$1.10. Postpaid.

Gladiolus Nanus

(Baby Glads)

A new strain of fall planted Gladiolus, easily grown and hardy down to 10 degrees F. They bloom in late June and early July, making dainty and graceful bouquets. Plant about 4 inches deep in the fall in well-drained soil. Prices, uniformly: 3 for 30c; 12 for \$1.00. Postpaid.

PEACH BLOSSOM—Lovely soft pink.

SPITFIRE—Brilliant, coral red.

BLUSHING BRIDE—White with red spot on lower petal.



Easter Lily, See Page 11

Oxalis (Shamrock)

AMERICAN—Produces bright pink flowers from early summer to frost and grows 8 to 10 inches tall. Ideal for borders and beds. Foliage very attractive, being rich deep green, shaded maroon in center of the leaf. 3 for 15c; doz. 55c. Postpaid.

DEPPER—Pure white. Prices same as American.

LASIANDRA—Crimson. Prices same as American.

Sparaxis

MIXED—Showy flowers on stiff, wiry stems about 9 inches high. Pleasing color combination with contrasting throat. Plant 2 inches deep. Mixed. 3 for 25c; doz. 95c. Postpaid.

Watsonias

Similar to gladiolus and bloom during June and July. The spikes grow 3 to 4 feet tall and do best in a sunny situation. Plant 3 inches deep. Offered in mixture. 3 for 25c; doz. 95c. Postpaid.

Begonias

Tuberous-Rooted

They begin blooming in July and are very valuable for summer flowers in shady places. They produce huge flowers in a great range of pastel and bright colors. The enormous blooms, often 4 inches and more across are held above the broad, attractive foliage. They may be grown in pots inside or started in pots and planted outside. Cultural directions will be sent with each order. Ready January to March.

DOUBLE CAMELLIA—Giant double flowers, beautifully frilled and fringed on the outer edges. Offered in the following colors in large flowering sized bulbs. **White, Rose, Scarlet, Red, Pink, Yellow, Orange, Salmon, Apricot, and Mixed.** Each 45c; 3 for \$1.20; doz. \$4.50. Postpaid. Not more than 3 kinds at doz. rate.

CARNATION OR DOUBLE FRILLED—Large double flowers resembling a carnation in form. The petals are frilled and have serrated edges. Offered **Scarlet, Red, Yellow, Pink, Orange and Mixed.** Each 45c; 3 for \$1.20; Doz. \$4.50. Postpaid.

SINGLE—This type produces the largest flowers, often 10 inches across. Offered in **Rose, Red, Yellow, Salmon, and Mixed.** Each 45c; 3 for \$1.20; Doz. \$4.50. Postpaid.

HANGING BASKET TYPE—Double blooms, often 100 flowers to a bulb. Offered in **Rose, Red, Orange, Yellow, Pink and Mixed.** Each 45c; 3 for \$1.20; Doz. \$4.50. Postpaid.

PICOTEE DOUBLE—Camellia type blossom with edges of each petal in a different shade of color. In mixture only. Each 45c; 3 for \$1.20; doz. \$4.50.

Eranthis Hyemalis

(Winter Aconite)

The earliest of all spring flowers. Golden buttercup flowers rest on emerald green leaves. Suited to shady, moist locations, even under trees. **3 for 25c; doz. 90c. Postpaid.**

Calochortus or Mariposa Tulip

A California flower resembling a tulip in shape with many colors, shades and markings. Offered in mixture. **3 for 30c; doz. \$1.10. Postpaid.**



Dutch Iris, see Page 5

Peruvian Lily

Large orange flowers and a splendid cut flower. Very productive of flowers on long stems. Root divisions. **Each 20c; 3 for 55c; doz. \$2.00. Postpaid.**

Bleeding Hearts

SPECTABILIS—The popular hardy perennial and of easiest culture. Long racemes of graceful heart shaped flowers. Will do well in shade or sun. **Each 75c; 3 for \$2.10. Postpaid.**

Montbretias

Flowers and spikes resemble small gladioli. Hardy in the West and South also in the North if given some protection with leaves or strawy manure. The bulb increase rapidly and make good cut flowers. Hardy perennials. **Yellow, Orange-red and Mixed. Doz. 35c; 100 for \$2.25.**

Bearded Iris

Very hardy and fast gaining in popularity. Plant the roots (rhizomes) so that they are barely covered with soil. Orders will be filled beginning July 1—and up to November 1. You may place your orders any time. Unless otherwise priced, all listed below are 25c each, \$2.50 per doz. Postpaid. One-half doz. at doz. rate.

When priced at 35c each the dozen price is \$3.50. One-half doz. at doz. rate.

Prices quoted apply only to one kind except 2 varieties may be ordered for a dozen.

NEWER VARIETIES OF IRIS

Newer Iris in extra fine varieties. Prices postpaid.

GOLDEN MAJESTY—Deep orange yellow of large size. One of the best. \$1.00 each.

ORMOHR—Gigantic blooms on tall well-branched stems. Manganese violet, heavily veined cream and dotted deep violet. \$1.25 each.

RADIANT—Large flowers of striking color. Standards orange with falls of glowing coppery red. Each \$1.00.

SIERRA SNOW—Late blooming; flowers pure white on fine stems and branches, an outstanding variety. Each \$1.00.

SNOW FLURRY—Buds open like a rose bud, delicate blue buds, opening into large, fluffy blooms. White, with most delicate faint tone of blue. \$2.75 each.

WM. A. SETCHELL—The largest good Iris. Standards steel blue; falls deep violet blue. Strong stems, vigorous plants. Each \$1.00.

STANDARD VARIETIES

BLACK WINGS—A near black colored Iris. Large and velvety.

CALIFORNIA GOLD—Extra fine, bright yellow. Each 35c.

CHEERIO—Standards red, flushed old gold; falls deeper in color. Each 35c.

CLARA NOYES—Beautiful blending of orange and apricot tones. Falls veined rose.

DARK KNIGHT—Big, tall, mahogany red. Each 35c.

DILKASH—Hybrid. Large flowers; standards violet with rich veining. Falls nearly black.

EARLY PURPLE NO. 10—We lost the name of this splendid Iris. Large flowers of deep purple that blooms early. A grand Iris to plant with a deep yellow variety. Each 35c.

EASTER MORN—One of the largest pure white sorts. Each 35c.



Iris, Radiant

EGYPT—Immense in size. Standards broad, of bronzy violet. Falls deep maroon purple.

EL CAPITAN—A splendid variety; light manganese violet bicolor; very large.

FRIEDA MOHR—Large lilac-rose bicolor. Tall. A splendid variety.

GAY HUSSAR—Rather small but very striking. Deep dark red falls with bright yellow standards.

HAPPY DAYS—Immense, soft yellow; branches loaded with blooms. Each 35c.

HELIOS—Huge flowers. Standards pure lemon yellow; falls the same, delicately penciled rose.

JUNALUSKA—Standards yellow, suffused bronze, with deep maroon falls. Each 35c.

LADY LILFORD—Hybrid. Standards deep violet-purple; falls blackish-purple with black beard.

LOS ANGELES—Pure white, edged with blue.

MINSTRE F. DAVID—Huge flowers; standards silky red purple; velvety falls of dark red purple.

MISS CALIFORNIA—Large orchid-pink. Tall stems; vigorous plants. 50c ea.

MOKI—Big, brownish bronze. Very free blooming. Early mid-season. Ea. 35c.

NARANJA—Rich, deep yellow with orange cast on falls. **Each 35c.**

NINGAL—Standards pure bronze buff; falls warm buff, overlaid with irridescent pale blue, a giant.

PICADOR—Extra fine; standards honey yellow; falls mineral red.

PURISSIMA—Fine, pure white, early sort. **Each 35c.**

SAN DIEGO—Giant deep blue with yellow beard.

SASS PINK—A fine near pink sort.

SENLAC—Brilliant claret red on strong stems.

SHINING WATERS—Large, clear, light blue flowers on tall stems. **Ea. 35c.**

WINNESHIEF—Fine dark blue. standards deep blue; falls ruffled blackish blue purple.

ZUNI—One of the best. Standards golden tan; falls red brown overlaid with copper.

Grand Iris Collection

We will send you postpaid, 10 varieties of **Bearded Iris**, our selection, properly labeled, for **\$2.00**. This will give you a fine range of color. They are not out of date sorts.

Color Iris Collection

We offer 10 varieties of **Bearded Iris** in 10 varieties selected for a range of color. These are not labeled as to color or variety but are good roots of nice sorts. **10 for \$1.45, postpaid.**

Rhubarb

Rhubarb can be planted in October and November, depending upon your locality. Fall planting enables you to have quicker results than spring planting. We offer good, strong divisions with good eyes to start the crowns. For quantities write for prices.

CANADA RED—This new variety has the redest interior in the stems of any kind yet introduced. The exterior of the large stems is bright crimson. The interior is really red throughout the whole length of the stem. Not a faint pink but a real red. Somewhat sweeter than most varieties. **Each 75c; 3 for \$2.00; doz. \$7.50. Postpaid.**

McDONALD—A splendid new rhubarb. Very productive of extra large stems with bright crimson exterior and better interior color than most of the older varieties. **Each 60c; 3 for \$1.60; doz. \$6.00.**



Egyptian or Top Sets

GERMAN WINE — A very popular, large stemmed variety with very large stalks of good color. A good sort for markets and forcing. **Each 50c; 3 for \$1.25; doz. \$4.25.**

ONION SETS

EGYPTIAN OR TOP SETS—These old fashioned sets are very hardy and once established furnish green onions for years. It is best to plant them in September and October along fence rows or buildings. In using the green onions leave part of the clump to grow for the next season. In planting, separate the little onion sets from the cluster and plant about 2 inches deep, with the pointed top to the set upward. **½ lb. 30c; lb. 55c. Postpaid.**

YELLOW MULTIPLIERS or SHALLOTS—Popular perennial type of bulbs that multiply each season. Desirable for early crop. Deep brown skin, mild white flesh. They are usually dug each year, cured and replanted in the early spring. **½ lb. 30c; lb. 55c. Postpaid.**

BOTTOM SETS—These are really small, well cured onions grown from seed but planted so thick that they reach only small sizes. They can be planted in September and October or at intervals throughout the spring and summer. When planted thus they are more mild and tender. Offered in **Brown or White**. **½ lb. 20c; lb. 35c. Postpaid. Not prepaid, 5 lbs. @ 28c; 10 lbs. @ 25c.**

Garlic

***SILVERSKIN**—Large, late keeping variety. **Postpaid. ½ lb. 35c; lb. 65c.**

***LARGE FRENCH**—An early, large sort grown for summer sales. Same prices as Silverskin.

HIGH GRADE LAWN GRASS

WRITE FOR PRICES ON QUANTITIES. We supply grasses for golf courses and other large plantings. We will gladly quote you. All prices quoted are subject to market change without notice.

Prices marked postpaid apply up to and including fourth zone, beyond which send additional. We specialize in high-grade lawn grass seed. During the past few years, we have supplied lawn seed for some of the largest institutions in the Pacific Northwest. Whether it is a small lawn or a large one, we can supply the seed and we will be glad to quote you either on mixtures or separate grasses. Many of the lawn grass mixtures on the market contain rye grass seeds. We consider rye grasses too coarse and too rapid of growth to be included in mixtures and therefore do not use them in our mixtures. In estimating the ground to be planted figure on one pound to 300 square feet of surface. If interested in lawns, write for our free bulletin on "Lawn Culture" by Ray W. Gill.

In Western Oregon, Washington and California, September and October are ideal for sowing lawns. There is more moisture and annual weeds are killed by winter frosts. Be careful to plant early enough so that the roots will be established before hard frost might lift and break off the young roots.

GILBRO SPECIAL—This super mixture is composed of the finest bladed grasses and are selected on account of their great endurance. It will make a soft velvety lawn of uniform texture and appearance. All varieties in this mixture are acid-loving grasses, thus they respond rapidly with acid fertilizers which in turn reduce the weed menace. We have many reports from our customers, who are highly pleased with this mixture. It is adapted to shade or sun. If white clover is desired in the mixture please mention when ordering. This mixture contains 40% creeping bent, making it necessary to ask the following prices: **Postpaid. Lb. \$1.40. Not prepaid, 5 lbs. @ \$1.35.**

OREGON LAWN MIXTURE—A very good mixture made from high grade grasses. It does not contain any rye grasses. We have sold this for years with fine results. It makes a hardy, fine-bladed turf well suited to the average soil. If white clover is desired in the mixture please specify when ordering. **Postpaid. Lb. \$1.15. (Not prepaid, 5 lbs. @ \$1.10.**

***ASTORIA BENT (Blue Tag Grade)**—A native acclimated sort grown in Clatsop County, Oregon. Besides creeping on the surface of the soil it has jointed roots that creep under ground. It is the best bent grass for high, well-drained soils and is very resistant to drought. It is often found growing in almost pure sand. It makes a thick, close turf, with fine leaf blades. **Postpaid. Lb. \$1.55. Not prepaid, 5 lbs. or more @ \$1.50.**

RED TOP—Valuable for shade and low, wet ground. **Postpaid. Lb. 50c. Not prepaid, 5 lbs. @ 45c.**

***SEASIDE BENT (Blue Tag grade)**—A native, acclimated variety, largely grown in Coos County. It creeps on the surface of the ground. **Postpaid. Lb. \$1.60. Not prepaid, 5 lbs. @ \$1.55.**

KENTUCKY BLUE GRASS—A splendid general purpose grass for lawns, with hardy growth and fine, close turf. 21 lbs. per bushel grade. It does best on sweet soil. **Postpaid. Lb. \$1.40. Not prepaid, 5 lbs. @ \$1.35.**

BLUE GRASS and WHITE CLOVER—Well proportioned mixture. **Postpaid. Lb. \$1.40. Not prepaid, 5 lbs. @ \$1.35.**

CHEWING'S FESCUE — Extensively used for lawns and golf courses. It makes a fine, close turf, very resistant to tramping. **Postpaid. Lb. \$1.10. Not prepaid, 5 lbs. @ \$1.05.**

CREEPING FESCUE—Rich, fine bladed foliage, making a splendid turf for shade or sun. Especially suited to sandy soils, banks, and terraces. One of our finest grasses. Many very fine lawns have been seeded with this alone and give splendid satisfaction. **Postpaid. Lb. \$1.15. Not prepaid, 5 lbs. @ \$1.10.**

WHITE CLOVER — Often used for lawns. We offer a fancy grade of seed for this purpose. **Postpaid. Lb. \$1.50. Not prepaid, 5 lbs. @ \$1.45.**

ENGLISH RYE GRASS—Rather coarse for lawns, but is often used for large parks. It should be sown very thickly for such purposes. **Postpaid. Lb. 40c. Not prepaid, 5 lbs. @ 35c.**

Peonies

Peonies can be planted successfully in October and November. We offer strong root divisions. Plant deep enough to cover the eyes about 3 inches. **Prices on these two varieties @ 50c; doz. \$5.00. Postpaid. 6 at doz. rate.**

EARLY RED—One of the first to bloom and of bright, deep red.

EARLY PINK—An early flowering pink variety.

From

GILL BROS. SEED CO.

Portland 16,

Montavilla Station

Oregon



ASPARAGUS ROOTS

We can fill orders for planting in late October and November. Plant as soon as possible after being received.

MARY WASHINGTON—Heavy producing with large green stalks of fine quality. Practically immune to rust and other diseases. This is now the standard variety for home or market production. No. 1 grade, doz. 50c; 50 for \$1.35; 100 for \$2.00. Postpaid. Write for prices on quantities.

PARADISE—This fine new variety has the same rich green color and deliciously mild flavor as the Mary Washington. It is very early, also resistant to rust and a much heavier yielder. A worthy new sort of high table quality. No. 1 grade, doz. 65c; 50 for \$1.70; 100 for \$2.50. Postpaid. Write for quantity prices.

EVERBEARING STRAWBERRIES

With the coming of the large, fine flavored, rich colored everbearing varieties there has been a great increase in growing strawberries in the home gardens. They can be planted in October and early November. Always select a well drained location convenient for watering the plants during the summer production. We supply healthy, clean plants.

ROCKHILL—Large bright berries produced in large quantities all summer and fall. This variety makes very few runners and most of the plants are secured by dividing up the one year old plants. This has the advantage of eliminating the second rate producers. Plants Postpaid. Doz. \$1.25; 50 for \$4.75; 100 for \$9.00. Write for quantity prices.

NEW STREAMLINER—A new variety of delicious quality and producing heavy crops of large berries. This new berry originated in Oregon and has made quite a sensation. It bears throughout the season from Spring until late Fall. Our plants are grown by the originator. Prices Postpaid. Doz. \$1.35; 50 for \$5.50; 100 for \$10.00.

COLCHICUM

A very unusual flower which blooms a few weeks after planting, blooming without foliage. They will also bloom on a shelf or table without water or soil. Flowers shaped somewhat like Crocus but larger and bloom before the foliage appears. It is sometimes called the Autumn Crocus.

AUTUMNNALE—Large flowers of soft rosy purple. Each 50c; 3 for \$1.35; doz. \$4.75.

ALBUM—Large pure white. Each 60c; 3 for \$1.65. Postpaid.

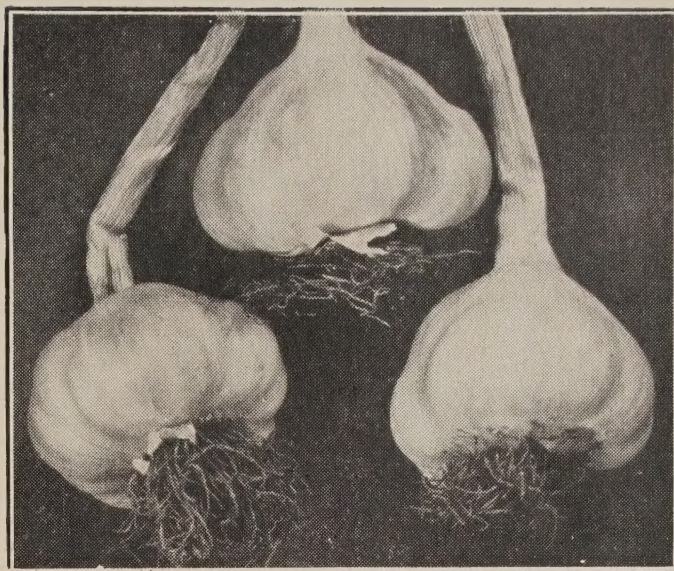
BORNMULLERI—Flowers delicate rosy pink, slightly marked with white. Each 25c; 3 for 70c; doz. \$2.50.

BARGAIN TULIPS

DARWIN MIXED—Here is a real bargain in Mixed Tulips, grown in Oregon. A large importer and grower made up this fine mixture from about 300 new and standard sorts of Darwin Tulips. It also contains a few Cottage and Breeder Tulip varieties. All are long stemmed later varieties. All these bulbs will bloom the first season. They are not the largest sized bulbs but are clean and healthy stock.

LARGE SIZED MIXED—About 1 to 1½ inches in diameter at the full base. Not less than a dozen. Doz. 60c; 50 for \$2.25; 100 for \$4.00. Postpaid.

MEDIUM SIZED MIXED—Ideal for bedding or for naturalizing. Also your chance to plant them to grow larger bulbs for home garden or sale. Not less than a dozen. Doz. 40c; 50 for \$1.55; 100 for \$3.00. Postpaid.



Garlic, See Page 15

INDEX

	Page
AMARYLLIS	10
ANEMONES	11
ASPARAGUS (Vegetable)	Inside Back Cover
BEGONIA, Tuberous Rooted	13
BLEEDING HEARTS	13
CALADIUM	10
CALLA LILIES	12
CALOCHORTUS (Mariposa Tulips)	13
COLCHICUM	Inside Back Cover
CHIONODOXA	4
CROCUS	5
DAFFODILS:	
YELLOW TRUMPET	1
WHITE TRUMPET	1
BICOLOR	1
INCOMPARABILUS	2
LEEDSII	2
BARRI	2
POETICUS	3
POETAZ	3
DOUBLE	3
POLYANTHUS	3
LITTLE KINDS	4
JONQUILS	4
MIXTURES	4
ERANTHIS HYEMALIS (Winter Aconite)	13
FREESIAs	5
GLADIOLUS NANUS (Baby Glads)	12
GARLIC (Vegetable)	15
GLOXINIAS	10
HYACINTHS	6
IRIS, DUTCH	5
IRIS, BEARDED	14
IRIS, ENGLISH	5
JONQUILS (See Daffodils)	4
LAWN GRASS	16
LENCOJUM, SNOWFLAKES	12
LILIES, HARDY	11
LILY OF THE VALEY	6
MUSCARI (Grape Hyacinths)	5
MONTBRETIAS	13
ONION SETS (Vegetable)	15
ORNITHOGALUM (Star of Bethlehem)	12
OXALIS	12
PEONIES	16
PERUVIAN LILY	13
RANUNCULUS	10
RHUBARB	15
SCILLAS	5
SPARAXIS	12
SNOWDROPS (Galanthus)	4
STRAWBERRIES, Everbearing	Inside Back Cover
TIGRIDIA	6
TUBEROSES	10
TULIPS:	
EARLY SINGLE and DOUBLE	7
PARROT	7
COTTAGE	8
DARWIN	8-9
TRIUMPH	9
BREEDER	9
BOTANICAL	10
WATSONIAS	12



Daffodil, Diotiona

GILL BROS. Seed Co.

Fall Catalog 1946